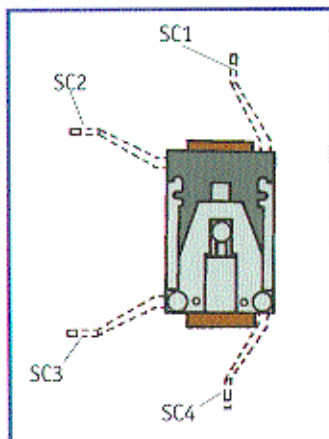
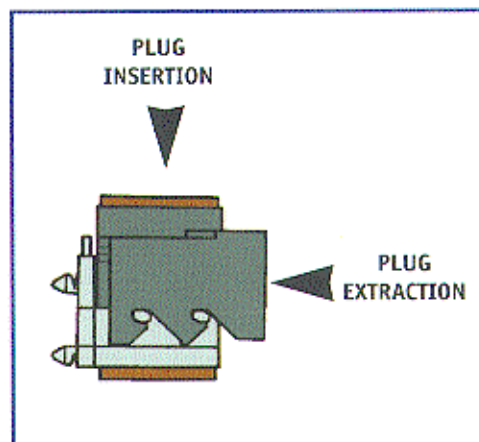
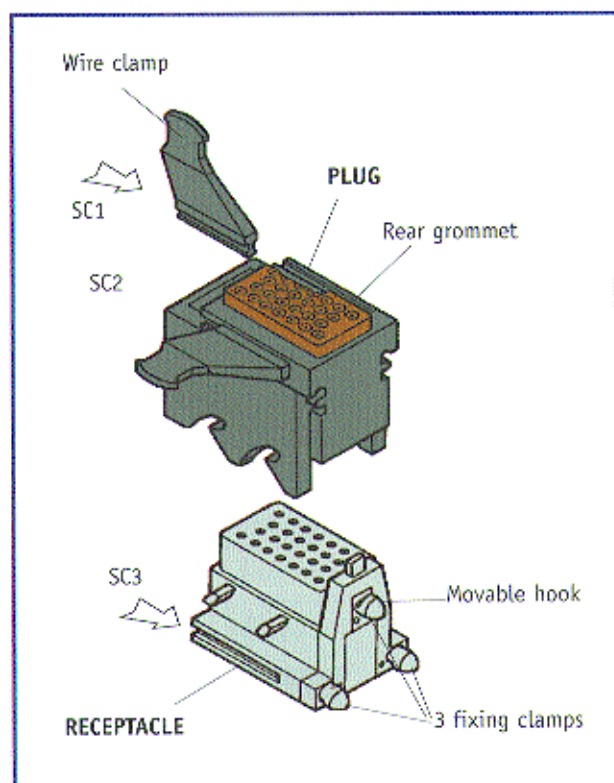




# PUSH-PULL CONNECTORS TYPE 1720

- DEUTSCHE AIRBUS STANDARD ABS 0364
  - Crimp wiring contacts (P) and (S) size 20, AWG gauge 20 to 24 MIL-C-39029, NAS 1662, NAS 1663, NSA 938151 PA 2000, AEROSPATIALE NSA 938152 SA 2000 and DEUTSCHE AIRBUS ABS 0364 Standards.
  - Instant installation of the receptacle on the structure with fixation hooks at 3 points, one of which is movable.
  - Sealed plug and receptacle with patented overmoulded grommets.
- SECTION 2'**
- Instant engaging and disengaging of plug on the receptacle by a Push-Pull system for assembling/disassembling wired panels



## THIS AIR LB CONNECTOR TYPE 1720 INCLUDES

- 1 receptacle to be fitted with female contacts (S).
- 1 PUSH PULL PLUG to be fitted with male contacts (P).
- 2 SC CABLE CLAMPS mounted straight or square on appropriate guides (SC1 - SC2 - SC3 - SC4).

## 2 DIFFERENT LAYOUTS

- 26 crimp contacts size 20.
- 10 crimp contacts size 20.



295 Kesmark  
Dollard-des-Ormeaux,  
Quebec, Canada H9B 3J1  
Tel.: (514) 421-2153  
Fax: (514) 421-3408  
[www.air-lb.ca](http://www.air-lb.ca)

