

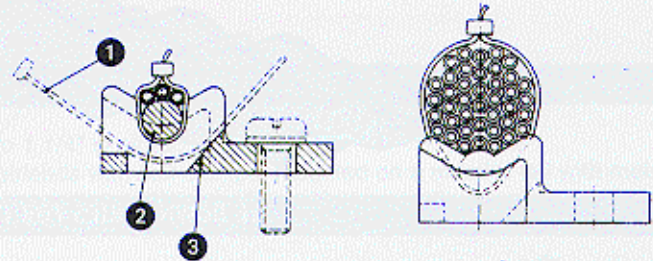


WIRING ACCESSORIES

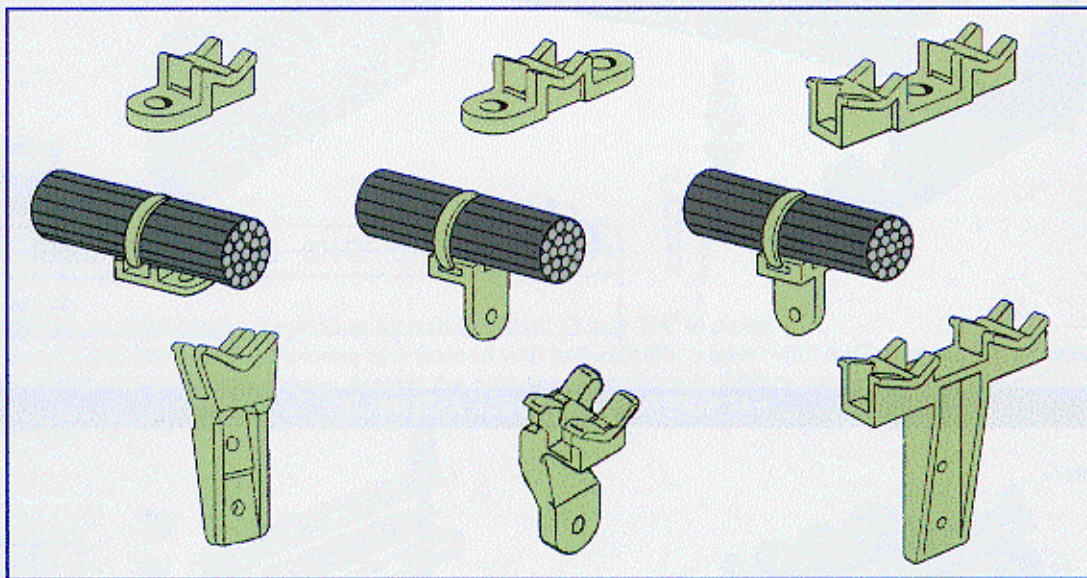
- Number of types reduced.
- Simplified stock control.
- Wiring cost reduction.
- Fixations for variable wiring sections.
- All diameters up to 30 mm (1 1/8 inches).
- Several sizes available in each type.

SECTION 8'

- 1 Cable tie
- 2 Cable guide with maximum fixation
- 3 Cable tie guide



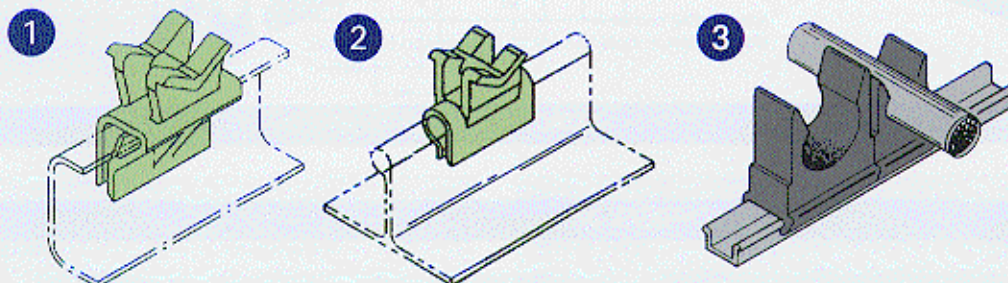
MOUNTING STRUCTURE - SCREW - RIVET - GLUE



SINGLE
DOUBLE
HEAVY DUTY

MOUNTING SUPPORTS - ANGLE 1 - PROFILE 2 - RAIL 3

These cable supports are adapted to metallic profiles. They snap-on and they are then wired

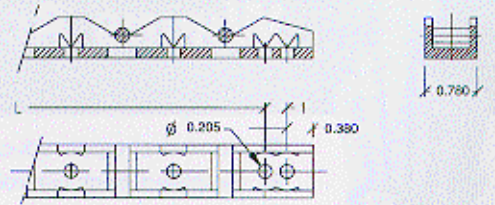
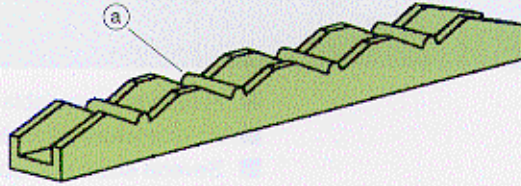


295 Kesmark
Dollard-des-Ormeaux,
Quebec, Canada H9B 3J1
Tel.: (514) 421-2153
Fax: (514) 421-3408
www.air-lb.ca

HARNESS SUPPORTS FOR CABLE ASSEMBLIES

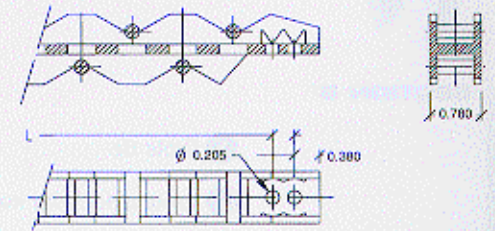
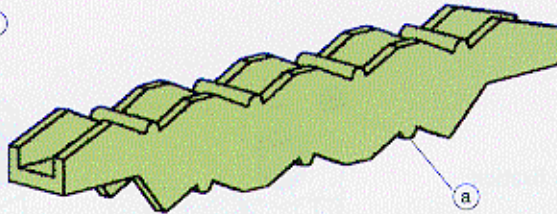
SINGLE SUPPORT

8-7-6-5-4 fixing points (a)



DOUBLE SUPPORT

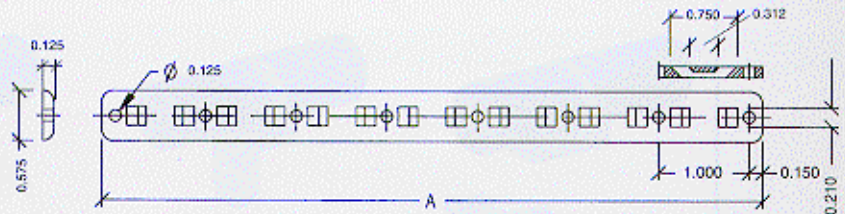
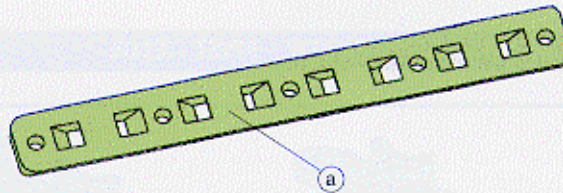
15-13-11-9-7 fixing points (a)



TIE DOWN STRIPS FOR CABLE ASSEMBLIES

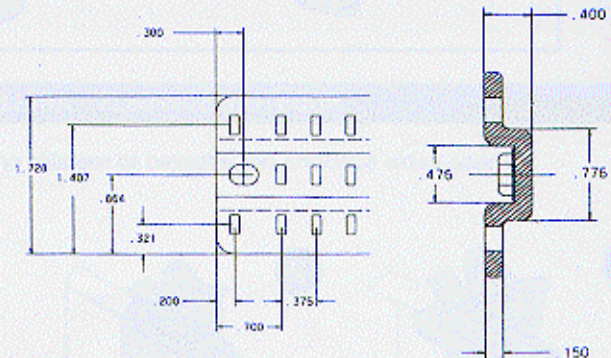
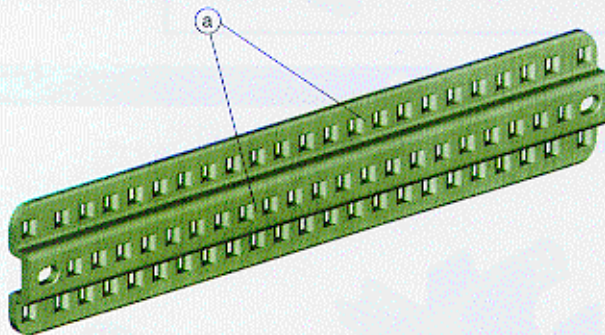
1 to 12 fixing points (a)

Can be cut to required length.



HAT SUPPORTS FOR CABLE ASSEMBLIES

1 to 30 fixing points (a)



TECHNICAL DATA

MATERIAL : Thermoplastic (ZYTEL 103 HSL)
CHEMICAL RESISTANCE : ASTM 543, MIL-T-81553, TT-T266-
 TT- M-261, ASTM D 1635,
 MIL-T-5624, MIL-T-83133

FLAMMABILITY : In conformity with FAA 25.853-B
OPERATING TEMPERATURE : -55°C to + 85°C