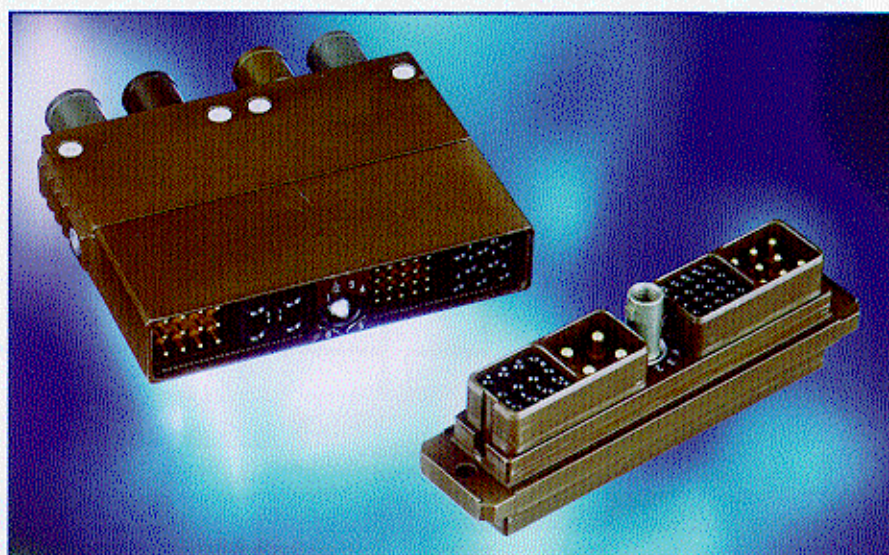




SECTION 2¹⁻²

"SIM" RECTANGULAR CONNECTORS METALLIC AND/OR COMPOSITE

- STANDARD UTE C 93425 Model
HE 513 - Pr EN 4165
- High density of interconnections and several layouts.
- Overall dimensions are smaller than that of the circular connectors, resulting in space saving.
- Types: METALLIC or COMPOSITE
STANDARD or HARDENED
2 MODULES or 4 MODULES
RECEPTACLES:
 - Standard and with flange.
 - Multiple monoblocks to drawings.
- Sealing of module is assured by a patented overmoulded grommet.
- Surface treatment: anodizing, nickel plating or olive green cadmium plating.
- Coupling with dissymmetric central screw with nuts and keys for 36 possible polarizations.
- Performance to MIL-C-39993 Series III Class J standards.
- Several standard and hardened accessories available.



TECHNICAL DATA

MECHANICAL

Shell	Metallic	:	Aluminium alloy
	Composite	:	Thermoplastic
Module	Material	:	Thermoplastic
Grommet	Material	:	Fluorinated elastomer
Contact	Material	:	Copper alloy
	Protection	:	Gold on nickel

CLIMATIC

Operating temperature	:	-55°C +175°C
-----------------------	---	--------------

RETENTION

Modules	:	> 25,4 daN
Contacts	:	Size 22 4,5 daN
		Size 20 8,9 daN
		Size 16 11 daN
		Size 12 13,3 daN
		Size 8 13,3 daN

SALT SPRAY

:	from 96h to 500h
	according to coating

ELECTRICAL

Size	AWG	Section mm ²	Ø on jacket	Current Rating	Voltage 50/60 Hz
22D	28/22	0,14/0,34	0,71/1,37	5 A	1 300 V
20	24/20	0,21/0,60	1,01/2,11	7,5 A	1 800 V
16	20/16	0,60/1,34	1,63/2,77	13 A	1 800 V
12	14/12	1,91/3,18	2,46/3,61	23 A	1 800 V
8	10/8	5,30/8,98	3,80/5,15	46 A	1 800 V



295 Kesmark
Dollard-des-Ormeaux,
Quebec, Canada H9B 3J1
Tel.: (514) 421-2153
Fax: (514) 421-3408
www.air-lb.ca

-  Metallic shell : Standard SIM 2N - Hardened SIM 2D
-  Composite shell : Standard SIM 2C - Hardened SIM 2B

The AIR LB SIM (Modular interconnection system) is a rectangular multicontact, multifunction connector. It consists of fixed receptacles that can be assembled side by side, or panel mounted, and removable plug connectors with removable snap-in quick connecting sealed modules.

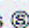
Two types are proposed: 2 modules (M2) configuration and 4 modules (M4) configuration with two coupling types; self-locking screw or rack plug.

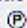
Coupling of the plug and receptacle polarization is mechanically ensured by a central dissymmetrical screw.

The coupling screw includes a 6 position polarizing system allowing 36 layouts.

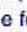
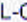
Composite accessories usually complete the connectors at the back of the housing.

Modules are made of thermoplastic fluorinated silicone elastomer with a patented overmoulded grommet, an AIR LB patented process. Modules have a 4 position polarization system which may be divided in two:

Female module for female contacts 

Male module for male contacts 

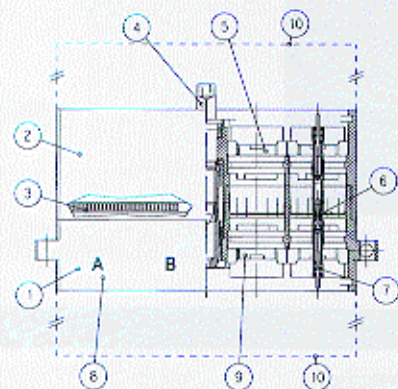
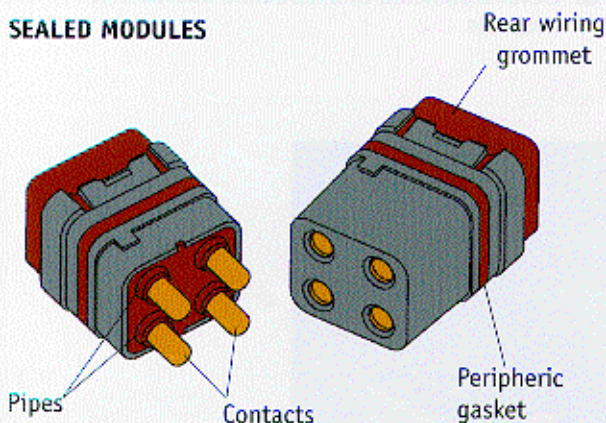
They may either be mounted on the back of the receptacle or on the plug. They are manually installed in the compartment shell and removed with an appropriate tool.

The female contacts  and the male contacts  are in conformity with MIL-C-39029/57-58 or EN 3155 in sizes 22, 20, 16, 12, and 8.

Wire wrap, pin contacts and special, coaxial, optical contacts are also available.

Modules are sealed in the back by a tripple barrier seal, interfacial side by male modules with pipes.

SEALED MODULES



- 1 - Receptacle
- 2 - Plug
- 3 - SIM 2D: R.F.I. ring for grounding continuity.
SIM 2B: System by patented overmoulded contacts.
- 4 - 36 locking and polarizing combinations.
- 5 - Thermoplastic and fluorinated silicone elastomer modules.
- 6 - Interfacial sealing of module by pipe compression.
- 7 - Each back wire is sealed with a tripple barrier seal.
- 8 - Module polarizing in the cavity. (Consult us for A-B-C-D references)
A-B-C-D marking for each cavity
Neutral standard N position

- 9 - Male and female modules may be mixed.
- 10 - Wiring accessories mounted on the receptacle side and plug side.
 - 10.1 - Wire clamp
 - 10.2 - Pipe cover
 - 10.3 - Flat wire clamp
 - 10.4 - Protection cover for components
 - 10.5 - Flat jumper clamp
 - 10.6 - Multi-directional clamp
 - 10.7 - Bus contact cover

